

## Burning Off

Product	Rate/Ha	Weeds Controlled
Roundup	Max 6 litres/Ha	Complete burn off
Roundup Flex	4.5 litres/Ha	Complete burn off
Gallup XL	Max 6 litres/Ha	Complete burn off

## Water Rates and Stock Withholding

	Hurler	Doxstar	Pastor	Forefront T	Thislex	Envy	Lupo	Clover-max	Roundup
Water Rate (litres/Ha)	200 - 400	300 - 400	300	200 - 300	200 - 400	100 - 400	200 - 400	100 - 400	150 - 250
Stock Withholding Days	3	7	7	7	14	7	14	14	5

## Sustainable Use of Pesticides Directive (SUD)

- Since November 2015, only a registered professional user can apply pesticides authorised for professional use only
- Individuals who are not registered as a professional user can buy pesticides authorised for professional use but these pesticides must be applied by a registered professional user. There is a requirement to keep appropriate records with details of the registered professional user who applied the pesticides.

## Sprayer Testing Service

- Under EU Legislation, all sprayers with a boom greater than 3 meters must be tested by a registered Inspector of Pesticide Application Equipment
- The interval between inspections must not exceed 5 years until 2020 and must not exceed 3 years thereafter
- New equipment must be inspected at least once within a period of five years after purchase. Sprayer testing can be carried out in Drinagh by our Department of Agriculture registered technician. Contact James Walsh on 028-30800 to arrange a test

For further queries please contact:

Darren Lynch 087-2140715  
Tim Regan 086-8241635



# Grassland Weed Control Guide 2018

## Reseeding – Post Emergence Spray

Product	Rate/Ha	Weeds Controlled
Clovermax	7 litre/Ha	Seedling weeds - clover safe <b>(not chickweed)</b>
Clovermax + Triad	Clovermax @ 5 litre/Ha + Triad @ 10 grams/Ha	Seedling weeds including Chickweed
Envy*	1.5 litres/Ha	Seedling weeds - not clover safe
*Timing: 1st February to 30th November for new sown leys		
Pastor Trio	1 litre/Ha	Seedling weeds - not clover safe
**Timing: 1st February to 31st August for new sown leys		



Chickweed    Mouse Ear Chickweed    Creeping Thistle    Buttercup    Dock    Redshank

## Dock Control

Product	Rate/Ha	Weeds Controlled
Hurler	1-2 litres/Ha	Docks, Dandelions, Nettles, Chickweed
Doxstar Pro	2 litres/Ha	Docks, Dandelions, Chickweed
Pastor Trio	2 litres/Ha	Docks, Dandelions, Nettles, Thistles
Timing: 1st February to 30th September		
Forefront T	2 litres/Ha	Docks, Thistle, Dandelion, Buttercup, Ragwort
Envy	2 litres/Ha	Docks, Dandelions, Nettles, Chickweed, Buttercup
Eagle	40-60 grams/Ha	Docks (Clover safe)
Prospect	22.5 grams/Ha	Docks (Clover safe)

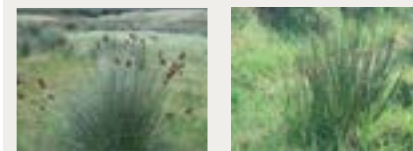


Too Early    Just Right    Too Late

## Rushes & Ragwort

Product	Rate/Ha	Weeds Controlled
Agritox MCPA	2.75 litres/Ha	Rushes, Buttercup, Ragwort
Hempacide 30	4.5 litres/Ha	Rushes, Buttercup, Ragwort
Lupo	3.9 litres/Ha	Rushes, Buttercup, Ragwort, Dock
D50	3.3 litres/Ha	Ragwort, Buttercup, Thistle, Dock
Forefront T	2 litres/Ha	Dock, Thistle, Dandelion, Buttercup, Ragwort

### Rushes



Too Late    Just Right

### Ragwort



Too Late    Just Right

## Rush Control Best Practice

1. Spray rushes when actively growing – ideally around 24cm – if rushes are strong top first and spray regrowth
2. Using a sticker such as 'Torpedo II' at 100ml per 100 litres of water will increase the efficacy of the chemical
3. Aim to have 48 hours dry after spraying to ensure good uptake (do not spray when rain is forecast)
4. Top rushes approx 4 weeks after spraying to allow grass to thicken
5. Refer to the Drinagh Sprays Brochure for recommended products and usage rates

## Thistles

Product	Rate/Ha	Weeds Controlled
Agritox MCPA	2.75 litres/Ha	Moderate on Thistles, Rushes, Ragwort
Thistlex	1 litre/Ha	Creeping Thistles, Sow Thistle, Spear Thistle

## Spot Treatments

Product	Rate/Ha	Weeds Controlled
Grazon 90	60 ml per 10 litres of water	Bramble, Gorse, Thistle, Nettle etc.
Garlon Ultra	150-200ml per 10 litres of water	Japanese Knotweed, Bramble, Gorse